

# CFMEU SAFETY ALERT

WESTERN AUSTRALIA

## Severe Weather Warning

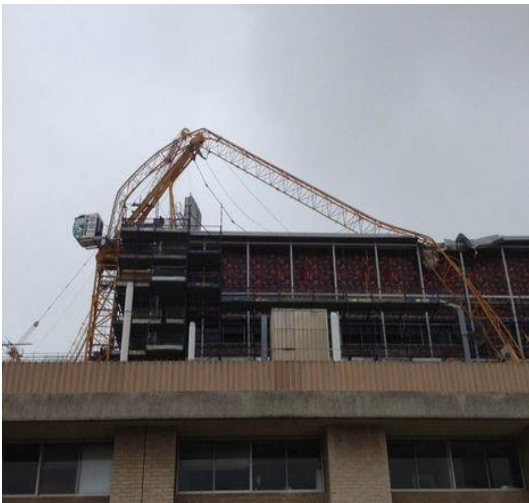
WA's coastline is bracing for a battering from what is looming as the State's biggest storm for almost a decade.

The Bureau of Meteorology confirmed that a deep low-pressure system moving towards the coast would bring with it a long period of strong winds, including possible gusts of more than 120km/h and heavy rain. It was expected to first hit the coast near Carnarvon and then spread to both northern and southern parts of the State. It's going to affect everywhere from Karratha all the way down to Albany, pretty much the whole west coast is going to see severe weather for a prolonged period of time.

Employers must implement their Emergency Preparedness plans to ensure the safety of workers and the public.

The CFMEU WA advises all builders and workers to prepare their sites for this severe weather period by consulting with the site safety committee or in the absence of a safety committee with workers to inspect and assess the site to establish areas of concern and implement any established site procedures for such an event.

### Actions to consider:



- Securing and storing loose materials and equipment;
- Ensuring scaffolds and hoardings have been engineered to withstand the predicted conditions;
- Remove any shade cloth and secure or remove scaffold planks;
- Anchor the roof panels on partially installed roofs;
- Secure all plant including tower cranes as per the manufacturers specifications or site procedures if of a higher standard;
- Tower cranes to be secured;
- Plan for flooding and undermining of structures & excavations;
- Secure or remove hazardous chemicals;
- Tilt panels must be secured to engineering designs;
- Remove all portable electrical equipment and leads.

After the inclement period has ended assess the site, determine safe and unsafe areas, plan any required rectification work and advise workers at prestart meetings prior to work recommencing.

Reassess the emergency preparedness plan and update if required.

REPORT UNSAFE WORK PRACTICES - CALL (08) 9228 6900 OR EMAIL [SAFETY@CFMEUWA.COM](mailto:SAFETY@CFMEUWA.COM)

**Stand up. Speak out. Come home.**