

# CFMEU COVID PROTOCOLS

WESTERN AUSTRALIA



## I am a close contact and have no symptoms

With COVID-19 in the community, it is important for you to know what to do to keep yourself and others safe. This protocol will help you know what to do if you are a close contact but have no symptoms.

Isolate for 7 days from date of contact.



Monitor for symptoms.



### Symptoms

Refer to 'I am a close contact who develops symptoms' protocol.



No symptoms  
Take a RAT on day 7.



### Test positive

Refer to the 'I have tested positive to COVID-19' protocol.



### Test negative

You can leave your home after day 7 of isolation, providing there are no new cases in your household. For the next 7 days, wear a mask indoors and outdoors and don't visit high risk settings (exemptions apply).



If someone in your household tests positive, isolate for 7 days (start this process again).



REPORT UNSAFE WORK PRACTICES - CALL (08) 9228 6900 OR EMAIL [SAFETY@CFMEUWA.COM](mailto:SAFETY@CFMEUWA.COM)

Stand up. **Speak out.** Come home.

# CFMEU COVID PROTOCOLS

WESTERN AUSTRALIA



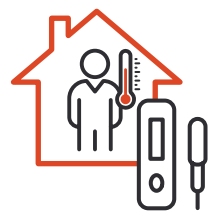
## I am a close contact who develops symptoms

With COVID-19 in the community, it is important for you to know what to do to keep yourself and others safe. This protocol will help you if you have symptoms and are a symptomatic close contact of someone who has tested positive for COVID-19.

Isolate for 7 days from date of contact.



Take a PCR or RAT as soon as symptoms develop.



### Test positive

Refer to the 'I have tested positive to COVID-19' protocol.



### Test negative

PCR: Continue to isolate  
RAT: Continue to isolate and take a RAT again in 24 hours.



### Test negative

Refer to the 'I am a close contact and have no symptoms' protocol.



### Test negative

You can leave your home after day 7 of isolation, providing you have a negative RAT on day 7 and there are no new cases in your household.



For the next 7 days, wear a mask indoors and outdoors, and don't visit high risk settings (exemptions apply).



### Symptoms include:



Fever



Sore/scratchy throat



Runny nose



Fatigue



Shortness of breath



Dry cough

REPORT UNSAFE WORK PRACTICES - CALL (08) 9228 6900 OR EMAIL [SAFETY@CFMEUWA.COM](mailto:SAFETY@CFMEUWA.COM)

Stand up. **Speak out.** Come home.

# CFMEU COVID PROTOCOLS

WESTERN AUSTRALIA



## I am a close contact and a critical worker

This protocol is for critical workers who are close contacts of someone who tests positive for COVID-19. This will come into effect with very high caseloads and when required, based on health advice.

### Contact your employer

You may be exempt from isolation requirements in order to attend work but only if it is necessary for continuity of critical operations, and other options have been exhausted.



### Symptoms

Refer to 'I am a close contact who develops symptoms' protocol.



### No symptoms

To go to work, you must take a RAT every day for 7 days.



### Test positive

Refer to the 'I have tested positive to COVID-19' protocol.









### If you test negative and you are going to work:

- you must isolate outside of work for 7 days
- wear a surgical mask outside home
- follow workplace safety requirements
- if possible, travel alone to work
- if not possible, wear a mask while car-pooling or using public transport



### Symptoms include:

- |   |  |
|---|--|
|  Fever     |  Runny nose           |
|  Fatigue   |  Sore/scratchy throat |
|  Dry cough |  Shortness of breath  |

REPORT UNSAFE WORK PRACTICES - CALL (08) 9228 6900 OR EMAIL [SAFETY@CFMEUWA.COM](mailto:SAFETY@CFMEUWA.COM)

Stand up. **Speak out.** Come home.

# CFMEU COVID PROTOCOLS

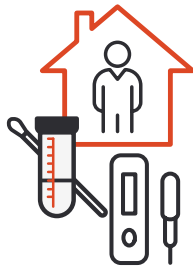
WESTERN AUSTRALIA



## I am not a close contact and I have symptoms

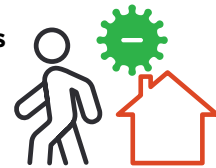
With COVID-19 in the community, it is important for you to know what to do to keep yourself and others safe. This protocol will help you know what to do if you have symptoms.

Get a PCR or RAT as soon as you can and isolate until results come back.



### Test negative

You are not required to isolate. But you should stay home where possible, until your symptoms clear.



### Test positive

Refer to the 'I have tested positive to COVID-19' protocol.



### Symptoms include:



Fever



Sore/scratchy throat



Runny nose



Fatigue



Shortness of breath



Dry cough

REPORT UNSAFE WORK PRACTICES - CALL (08) 9228 6900 OR EMAIL [SAFETY@CFMEUWA.COM](mailto:SAFETY@CFMEUWA.COM)

**Stand up. Speak out. Come home.**

# CFMEU COVID PROTOCOLS

WESTERN AUSTRALIA



## I have tested positive for COVID-19

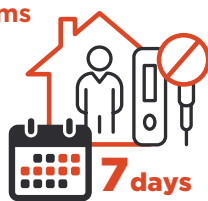
With COVID-19 in the community, it is important for you to know what to do to keep yourself and others safe. This protocol will help you know when and how long you need to isolate for if you are COVID-19 positive.

If you return a positive Rapid Antigen Test (RAT), you must register your result with the Department of Health.

Isolate at home for 7 days.



No symptoms after 7 days  
No further test is required.



Symptoms on day 7  
Remain in isolation until symptoms cease.



OR

You can leave home. Wear a mask indoors and outdoors for the next 7 days.



You are cleared by a medical professional.



Symptoms include:



Fever



Sore/scratchy throat



Runny nose



Fatigue



Shortness of breath



Dry cough

REPORT UNSAFE WORK PRACTICES - CALL (08) 9228 6900 OR EMAIL [SAFETY@CFMEUWA.COM](mailto:SAFETY@CFMEUWA.COM)

Stand up. **Speak out.** Come home.