

CFMEU SAFETY GUIDANCE

WESTERN AUSTRALIA

TEMPORARY POWER and PORTABLE ELECTRICAL EQUIPMENT (PEE)

The use of temporary portable electrical equipment must be in accordance with AS 3012 – 2010 Electrical wiring on construction and demolition sites as a minimum standard.

Temporary electrical wiring

Must be identified by iridescent yellow tape marked with the words “construction wiring”, spaced at intervals not exceeding 5 meters. If live permanent wiring is located near where construction activity is occurring it shall be marked with the words “live wiring” at intervals not exceeding 5 meters.

Distribution boards (DB's)

Must be located on each level and positioned so that the work being performed can be reached by one extension lead not exceeding 30 meters. The DB must be secured on a stable surface and the lid must be closed. The lid must have stickers and signage identifying the power rating i.e. 250V, 450V, the hazard (electric shock sticker) and how leads are attached to the board by wrapping around an insulated bar underneath the board and through the hole below. The electrical supply to the DB must be protected by conduit or mechanical means against damage from contact by plant. Where multiple DB's are used on a job they should be identified by a number i.e. DB 001, DB 002 etc.



REPORT UNSAFE WORK PRACTICES - CALL (08) 9228 6900 OR EMAIL SAFETY@CFMEUWA.COM

Stand up. Speak out. Come home.

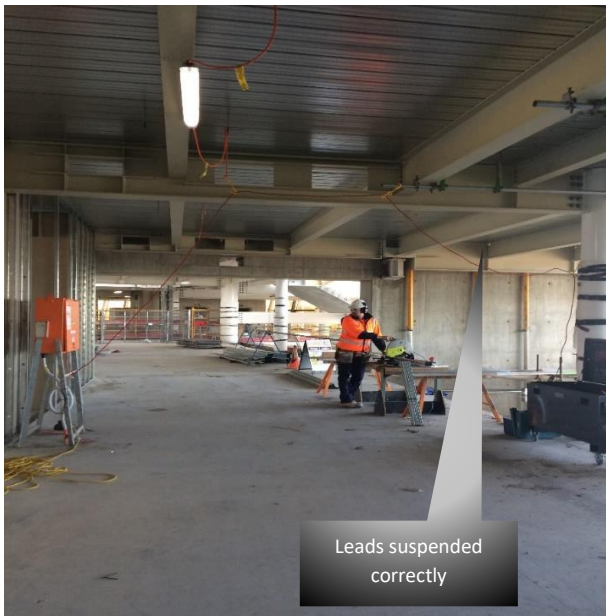
CFMEU SAFETY GUIDANCE

WESTERN AUSTRALIA

The RCD's within the DB must be protected by a hard-lockable cover.

Electrical leads and Portable electrical Equipment

Electrical extension leads must be a maximum of 30m in length, not joined, not run from one level to another and not used in a coiled or reeled configuration. They must be plugged into the DB, run through the hole at the bottom of the DB wrapped around the insulated bar on the DB and then supported off the ground on insulated hooks or lead stands. The lead can then be directly plugged into a portable electric power tool or a portable residual current device (RCD) and then a portable electric power tool can be plugged into the RCD. You cannot run a lead to an RCD and then another lead out of the RCD (piggy backing). Double adaptors and 3 pin plug adaptors (piggy backs) and domestic type connectors, RCD's etc. are not to be used on construction or demolition sites.



Testing and tagging all (PEE) must be tested and tagged every 3 months by a trained competent person. PEE to be tested includes, power tools, flexible leads, lead extension sets, portable DB's & RCD's. RCD's on welding units and EWP's must also be inspected tested and tagged.

An up to date register recording testing and tagging must be kept on site. There is a 2-week grace period for retagging PEE.

REPORT UNSAFE WORK PRACTICES - CALL (08) 9228 6900 OR EMAIL SAFETY@CFMEUWA.COM

Stand up. **Speak out.** Come home.