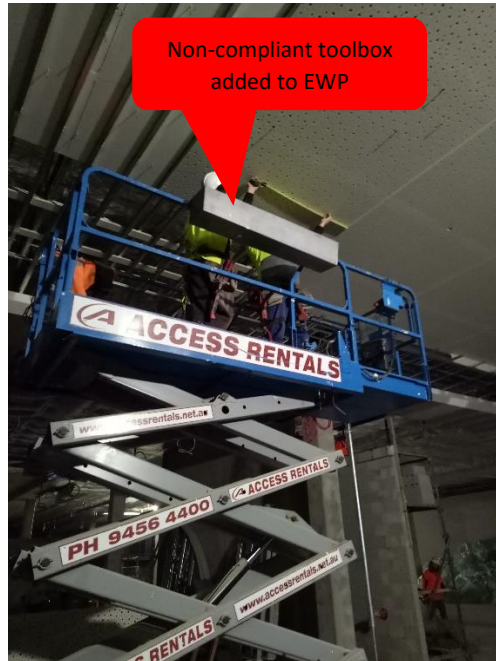
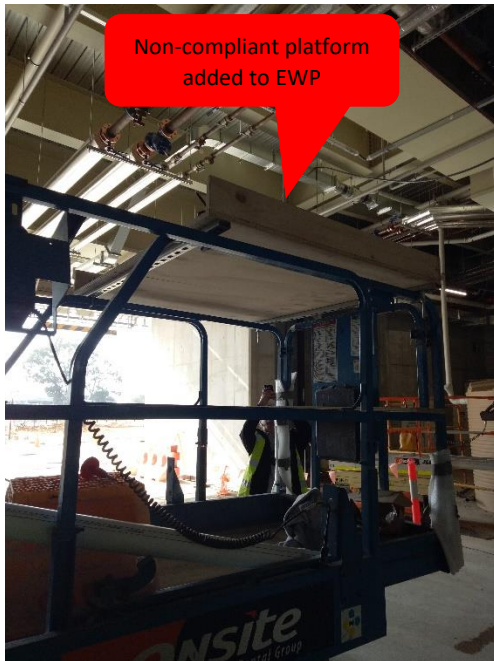


# CFMEU SAFETY GUIDANCE

WESTERN AUSTRALIA

## Modifications to Elevated Work Platforms



Elevated Work Platforms (EWPs) have been designed for a specific purpose. Adding, altering, changing or adjusting the EWP in any way, shape or form could be in breach of the design and manufacturing specifications, and could result in disastrous and devastating effects on the health and safety of all workers who work in, with and around these machines.

In light of this, the CFMEU expects the following to be strictly adhered to when any proposed change or alteration is being considered to these machines:

1. Enquiries are to be made of the original EWP manufacturer, to gain their written advice and approval in regard to the modification proposal.
2. That there is strict compliance with any recommendations of the manufacturer – or where the original manufacturer cannot be contacted, there be a suitably qualified “**independent**” engineer engaged to undertake a new risk assessment and re-design of the relevant structural and stability requirements of the EWP, against the requirements of Australian Standard AS1418, Parts 1 & 10.

REPORT UNSAFE WORK PRACTICES - CALL (08) 9228 6900 OR EMAIL [SAFETY@CFMEUWA.COM](mailto:SAFETY@CFMEUWA.COM)

**Stand up. Speak out. Come home.**

# CFMEU SAFETY GUIDANCE

WESTERN AUSTRALIA

3. In the event of an attachment such as a cradle being placed on a EWP, a suitably qualified engineer must:

- Design the cradle and its connection to the EWP
- Check the relevant structural and stability design requirements
- Specify the maximum dimensions and mass of the load that the cradle or attachment has been designed for, and
- Oversee revised stability testing of the EWP when fitted with a fully loaded cradle/ attachment, in accordance with Australian Standard AS1418, Parts 1 &10.

4. The original SWL must not be exceeded – and where modified (i.e. reduced in order to maintain compliance with structural & stability requirements of AS 1418, Parts 1 &10), the new SWL be clearly displayed on the EWP and cradle.

5. The EWP with cradle/attachment must be registered with WorkSafe as an 'alteration of plant design'. It is also expected that any Safe Work Method Statement (SWMS) prepared in connection with the use of the EWP with cradle specifically addresses the need to ensure that all loads on the cradle remain stable and secured.

All of the above requirements are consistent with and mirror the minimum requirements as set out by WorkSafe Western Australia.

All the new documentation regarding the EWP must also be provided to the CFMEU OHS Representative on site.

REPORT UNSAFE WORK PRACTICES - CALL (08) 9228 6900 OR EMAIL [SAFETY@CFMEUWA.COM](mailto:SAFETY@CFMEUWA.COM)

**Stand up. Speak out. Come home.**